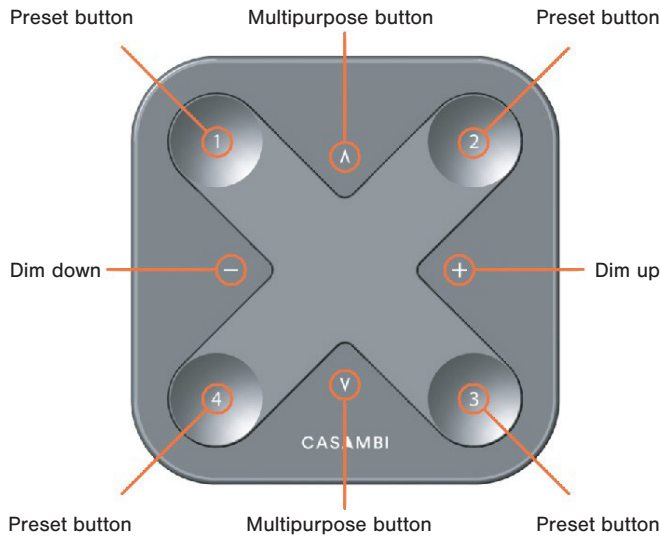




Project: \_\_\_\_\_  
 Reference Type: \_\_\_\_\_  
 Item Code: \_\_\_\_\_  
 Date: \_\_\_\_\_  
 Notes: \_\_\_\_\_

# XPRESS-LR



**WARNING**  
 Cancer and Reproductive Harm  
[www.P65Warnings.ca.gov](http://www.P65Warnings.ca.gov)

## BASIC FUNCTIONS

The preset buttons of Xpress-LR can be configured via the Casambi app. A light indicates the selected preset.

### Dim up, Dim down:

- Smooth dimming of last chosen preset

### Multipurpose buttons:

- Change of color temperature in steps of 25 Kelvin
- Change of the indirect/direct ratio

### Preset buttons:

- Individual luminaire control
- Group control
- Control of all luminaires
- Recall scenes
- Recall animations

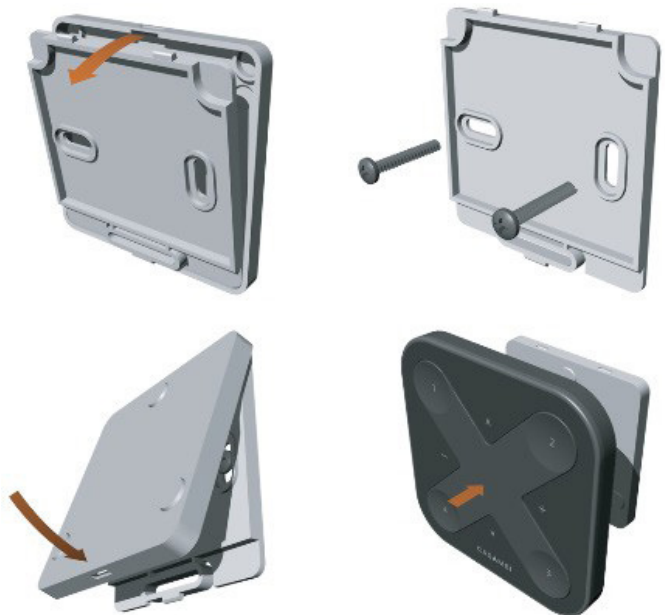
## PRODUCT DESCRIPTION

Xpress-LR is a wireless user interface that brings huge flexibility to interior design as furniture can be replaced and walls can be rebuilt without having to take the wiring of switches or switch placement into account. The switch can be kept wherever the user needs it and it gives direct access to all the important Casambi lighting control functionalities.

## CASAMBI MESH-NETWORK COMPATIBILITY

There are different radio modes that can be selected when creating a network in the Casambi App: 'Balanced', 'Better Performance' and now 'Long Range' options. The Xpress-LR enables long-range capabilities only when the long-range radio mode has been selected and all the other devices within the network are long-range capable. It will revert to the shorter, standard range when deployed in networks set to 'Balanced' or 'Better Performance' modes.

## MOUNTING



The Xpress-LR switch includes a wall mounting bracket. The Xpress-LR magnetically attaches to the mounting bracket.



Project: \_\_\_\_\_

Reference Type: \_\_\_\_\_

Item Code: \_\_\_\_\_

Date: \_\_\_\_\_

Notes: \_\_\_\_\_

**SMART FUNCTIONS****Dimming**

- **Hold the Dim down or Dim up button:**  
Smooth dimming of last chosen preset, cycle takes 5 seconds
- **Press the Dim down button:**  
Chosen preset goes to 0%
- **Press the Dim up button:**  
Chosen preset goes to 100%

**Preset Buttons**

- **Press:**  
The chosen preset (luminaire control, group control, all luminaires, scene recall or animation recall) will turn on
- **Press again:**  
The chosen preset (luminaire control, group control, all luminaires, scene recall or animation recall) will turn off

**Color Temperature**

- **Hold the Multipurpose button:**  
Changes color temperature smoothly, cycle takes 5 seconds
- **Press the upper Multipurpose button:**  
Changes to the warmest color temperature
- **Press the lower Multipurpose button:**  
Changes to the coldest color temperature

**Turn Off**

- **Press the Dim down and Dim up button for more than 1 second:**  
Turns all luminaires off in selected network

**Indirect/Direct Ratio\***

- **Hold the upper Multipurpose button:**  
Dims up smoothly the indirect lighting, cycle takes 5 seconds
- **Hold the lower Multipurpose button:**  
Dims up smoothly the direct lighting, cycle takes 5 seconds
- **Press the upper Multipurpose button:**  
The indirect part goes to max level
- **Press the lower Multipurpose button:**  
The direct part goes to max level

\*sum of indirect/direct in all cases 100%





Project: \_\_\_\_\_

Reference Type: \_\_\_\_\_

Item Code: \_\_\_\_\_

Date: \_\_\_\_\_

Notes: \_\_\_\_\_

**TECHNICAL DATA****Input**

- Voltage: 3VDC
- Battery Type: CR2430 Lithium Coin Cell

**Radio Transceiver**

- Operating frequencies: 2.402...2.480 Ghz
- Maximum output power: +8 dBm

**Operating conditions**

- Operating temperature: +32°F... +104°F (0°C... 40°C)
- Storage temperature: -13°F... +158°F (-25°C... 70°C)
- Max. relative humidity: 0...80%, non-cond.

**Mechanical data**

- Dimensions: 3.54"x3.54"x.47" (90 x 90 x 12 mm)
- Weight: 2.54 oz (72 g)
- Degree of protection: IP20 (indoor use only)

**Certifications**

- Contains FCC ID: T7V1780
- Contains IC: 216Q-1780

**DISPOSAL INSTRUCTIONS**

This electrical product must not be disposed of as unsorted municipal waste. Please dispose of this product correctly: Regulations governing hazardous waste identification, classification, generation, management and disposal, found in title 40 CFR parts 260 through 273, should be observed.

This equipment has been tested and found to comply with the limits for a Class B digital device, pursuant to part 15 of the FCC rules. These limits are designed to provide reasonable protection against harmful interference in a residential installation. This equipment generates, uses and can radiate radio frequency energy and, if not installed and used in accordance with the instructions, may cause harmful interference to radio communications. However, there is no guarantee that interference will not occur in a particular installation. If this equipment does cause harmful interference to radio or television reception, which can be determined by turning the equipment off and on, the user is encouraged to try to correct the interference by one or more of the following measures:

- Reorient or relocate the receiving antenna,
- Increase the separation between the equipment and the receiver,
- Connect the equipment into an outlet on a circuit different from that to which the receiver is connected,
- Consult the dealer or an experienced radio/TV technician for help.

Operation is subject to the following two conditions:

- (1) This device may not cause harmful interference, and
- (2) this device must accept any interference received, including interference that may cause undesired operation.

This device complies with Industry Canada's license-exempt RSSs. Operation is subject to the following two conditions:

- (1) This device may not cause interference; and
- (2) This device must accept any interference, including interference that may cause undesired operation of the device.

Le présent appareil est conforme aux CNR d'Industrie Canada applicables aux appareils radio exempts de licence. L'exploitation est autorisée aux deux conditions suivantes:

- (1) l'appareil ne doit pas produire de brouillage;
- (2) l'utilisateur de l'appareil doit accepter tout brouillage radioélectrique subi, même si le brouillage est susceptible d'en compromettre le fonctionnement.